

**SEMPLIFICA**  
*Simplifies*

**VELOCIZZA**  
*Fast production and installation*

**E' COMPATTO**  
*Compact*

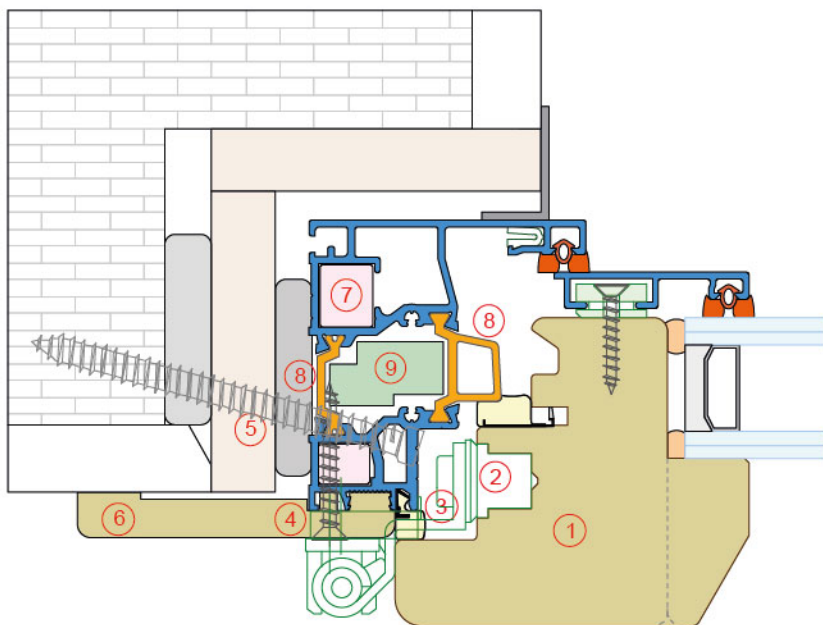
**E' MODULARE**  
*Modular*

## L'evoluzione dei sistemi legno-alluminio *The evolution of the wood-aluminum systems*

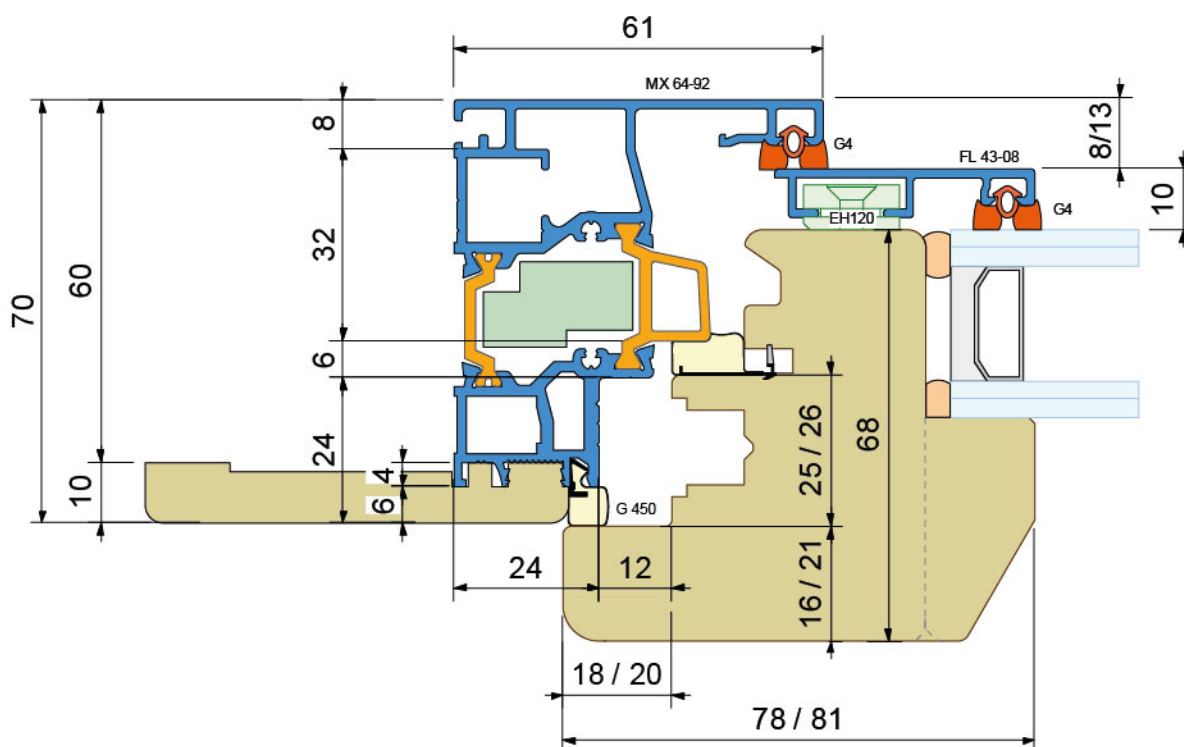
- Il profilo telaio ha funzione strutturale e di rivestimento  
*The frame profile has a structural and coverage functions*
- Semplifica e velocizza la produzione e l'installazione  
*Simplifies and speeds up production and installation*
- Compatibile con ferramenta standard per infissi in legno  
*Compatible with standard hardware for wooden windows*
- Ingombro contenuto  
*Limited space required*
- Nessun utensile dedicato - Profilatura anta standard  
*No special tool required - The geometry is standard*



**CE** marking available  
by **cascading**



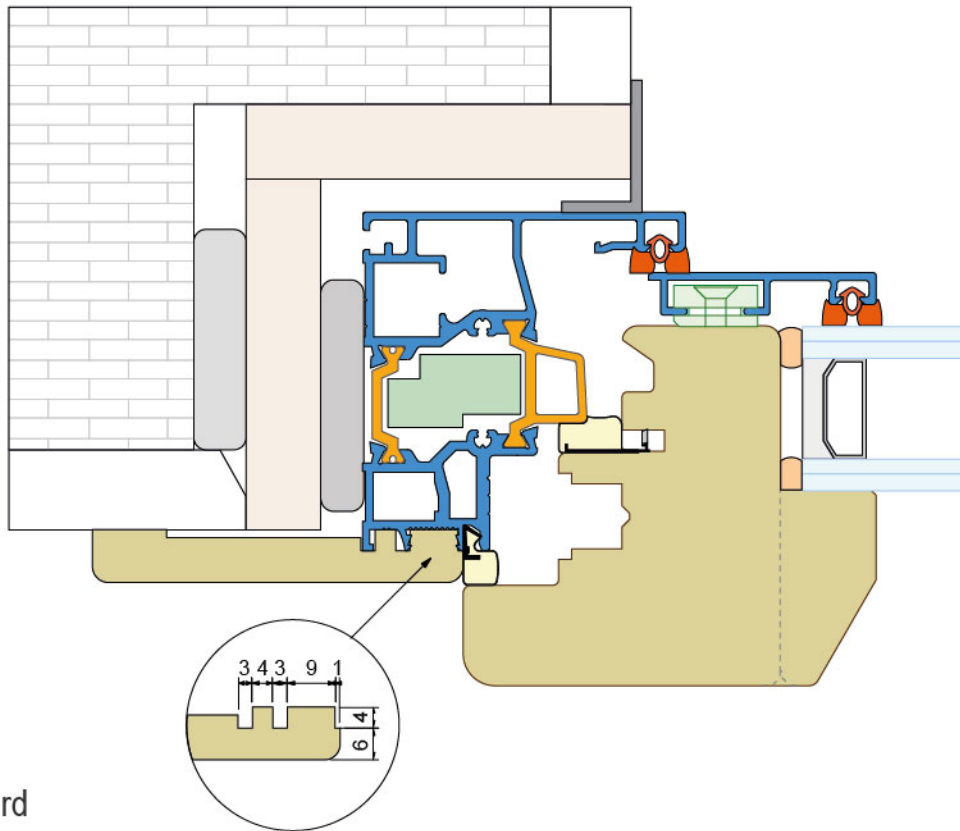
- ① Profilatura anta standard  
*No special tool required*
- ② Ferramenta standard o a scomparsa asse 13  
*Standard or concealed hardware axis 13*
- ③ Alloggiamento guarnizione acustica nel telaio  
*The acoustic gasket is placed in the frame*
- ④ Fissaggio ferramenta con viti autofilettanti  
*The hardware is fixed with self-tapping screws*
- ⑤ Il profilo prevede l'alloggiamento della vite di fissaggio  
*The profile involves the insertion of fixing screw*
- ⑥ Coprifilo standard spessore 10mm  
*Standard staff bead thickness 10mm*
- ⑦ Assemblaggio rapido con quadrette a bottone  
*Corner joint with spring loaded buttons*
- ⑧ Profili verniciabili in poliammide per un buon isolamento termico  
*Paintable polyamide profiles for good thermal insulation*
- ⑨ Profili in PE per ottimizzare l'isolamento termico  
*PE profiles to maximize thermal insulation*



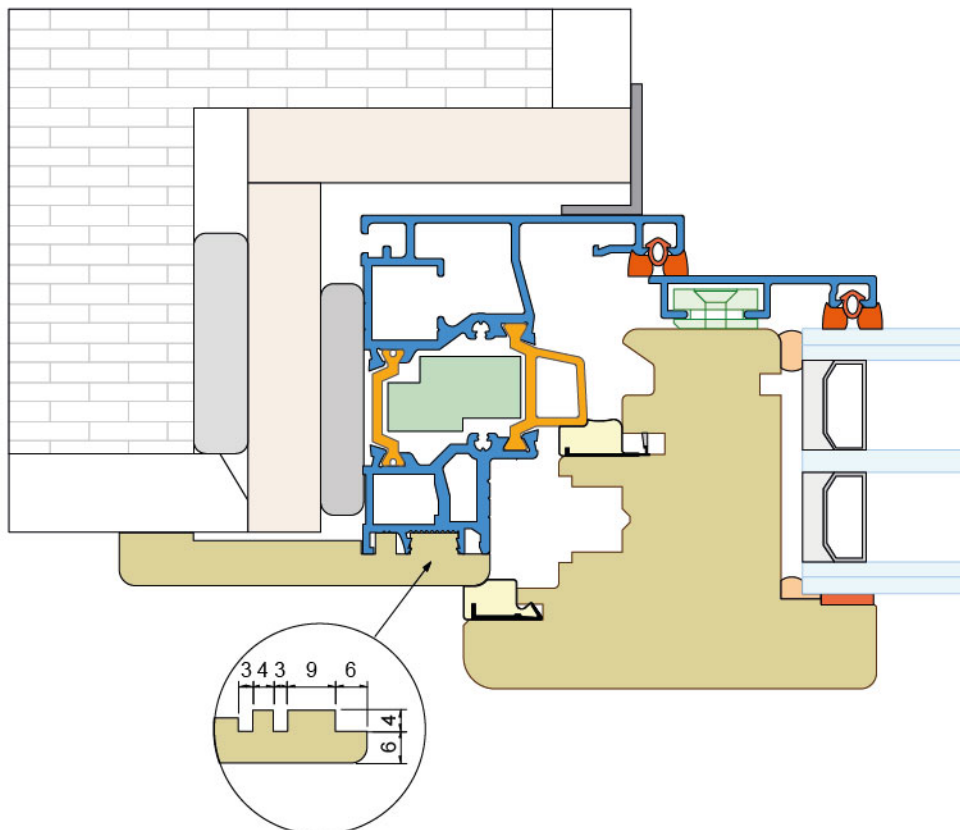
**Performance**

	Finestra <i>Window</i>	Portafinestra <i>French window</i>		Legno tenero <i>Soft wood</i>	Legno duro <i>Hard wood</i>
Permeabilità all'aria <i>Air permeability</i>	4	4	Isolamento termico <i>Thermal insulation</i> Uf [W/m <sup>2</sup> K]	1,33	1,57
Tenuta all'acqua <i>Water tightness</i>	9A	8A			
Resistenza al vento <i>Resistance to wind</i>	C5	C4			

Con coprifilo standard - Guarnizione acustica nel telaio  
*With standard staff bead - The acoustic gasket is placed in the frame*

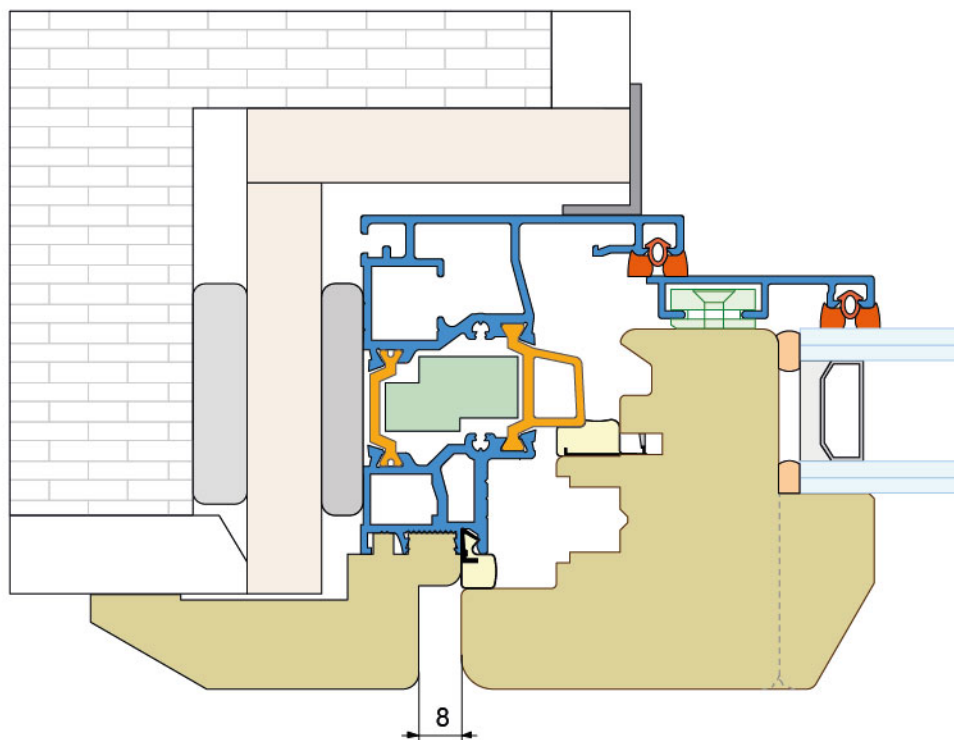


Con coprifilo standard  
*With standard staff bead*



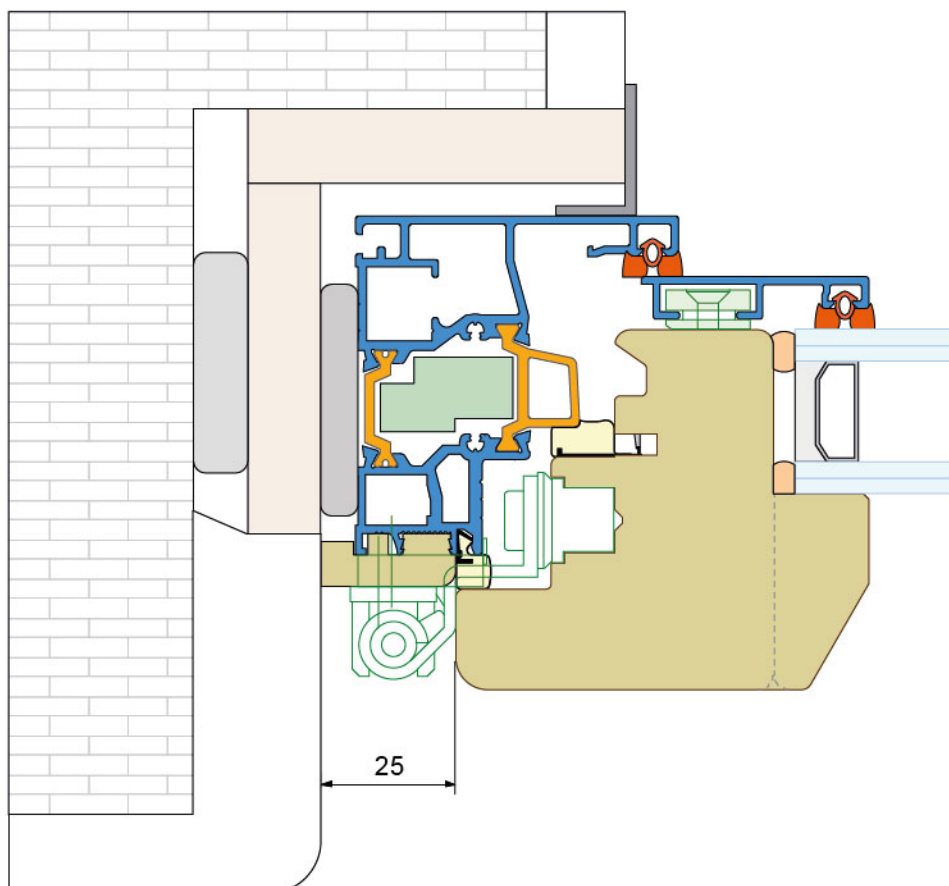
Anta complanare al coprifilo

*The wing of the window is coplanar with the staff bead*



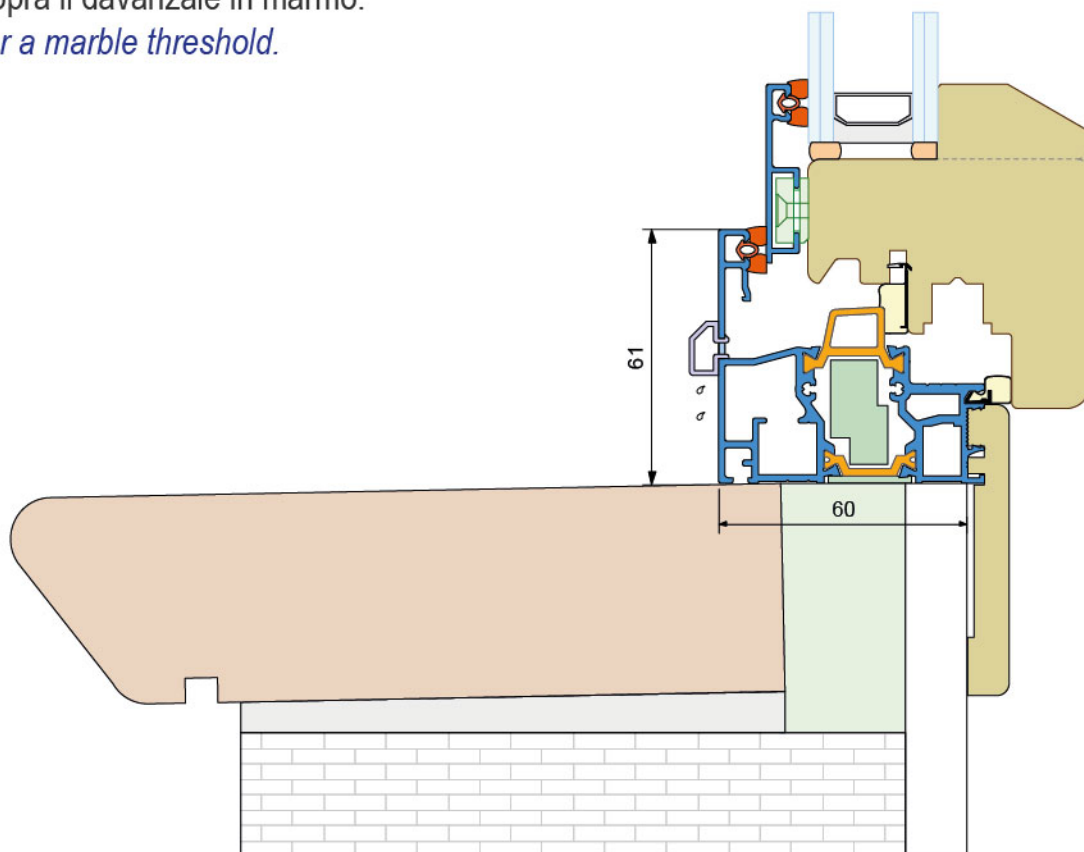
Installazione a centro muro

*Half wall installation*

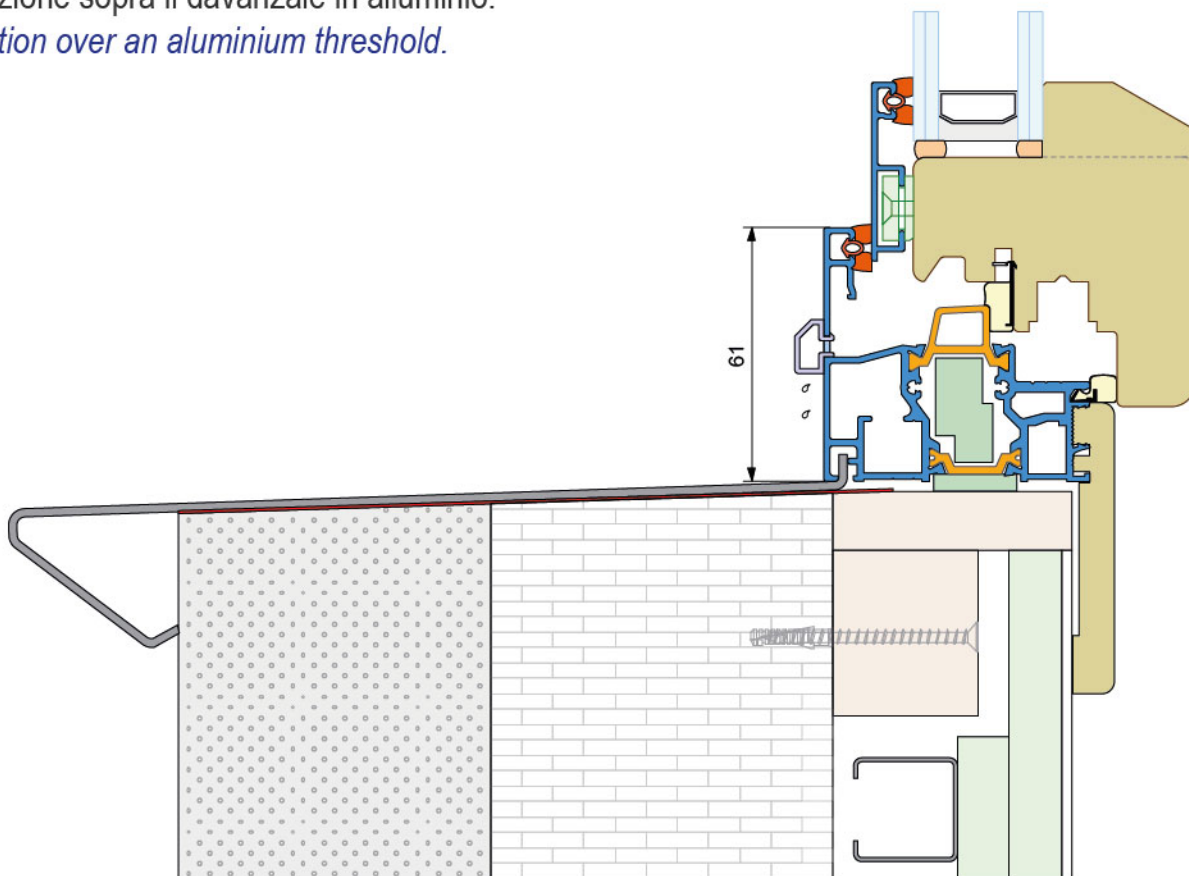


**Nodo inferiore finestra**  
*Bottom section of the window*

Installazione sopra il davanzale in marmo.  
*Installation over a marble threshold.*



Installazione sopra il davanzale in alluminio.  
*Installation over an aluminium threshold.*



**Nodo inferiore portafinestra**  
**Bottom section of french door**

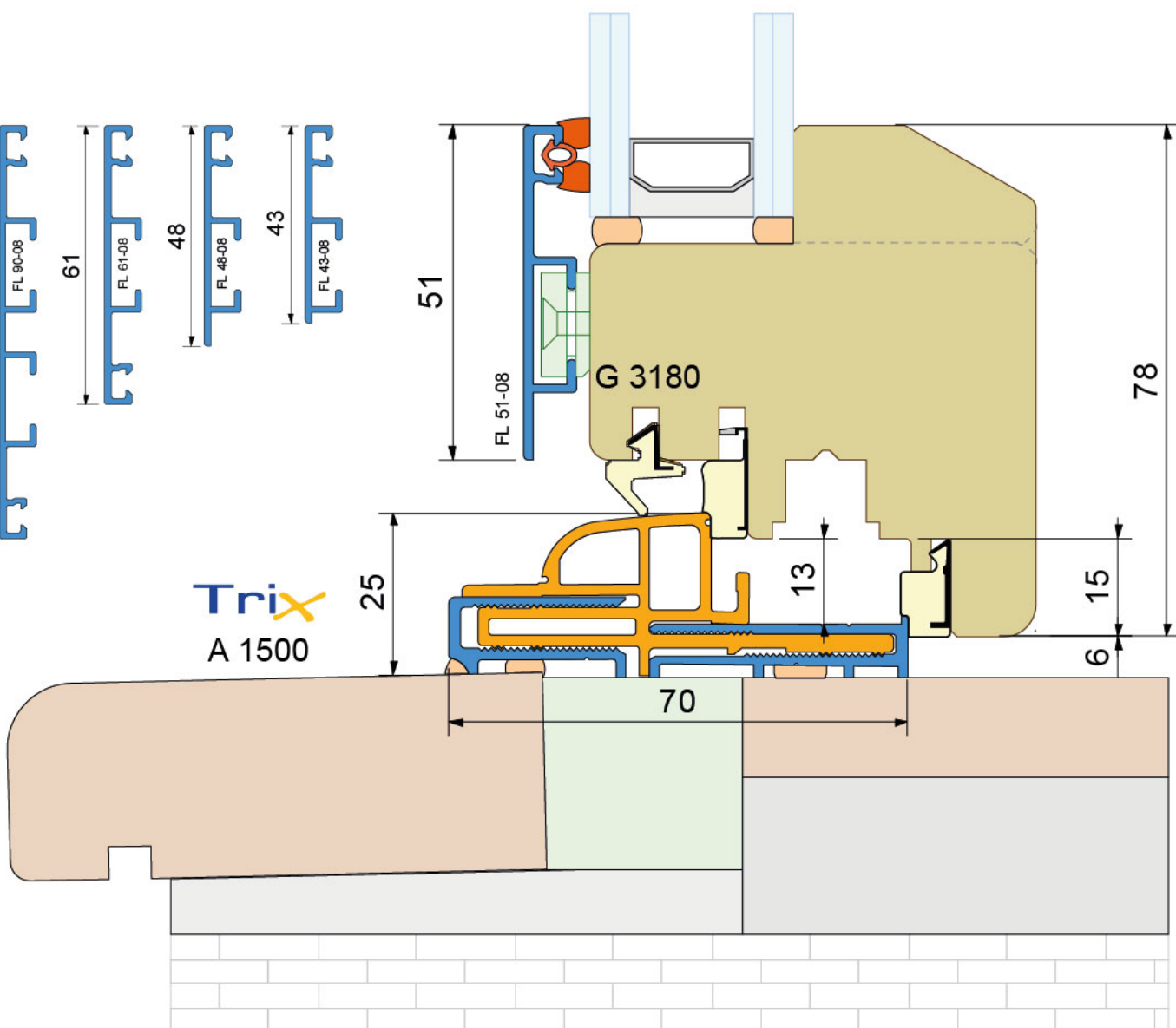
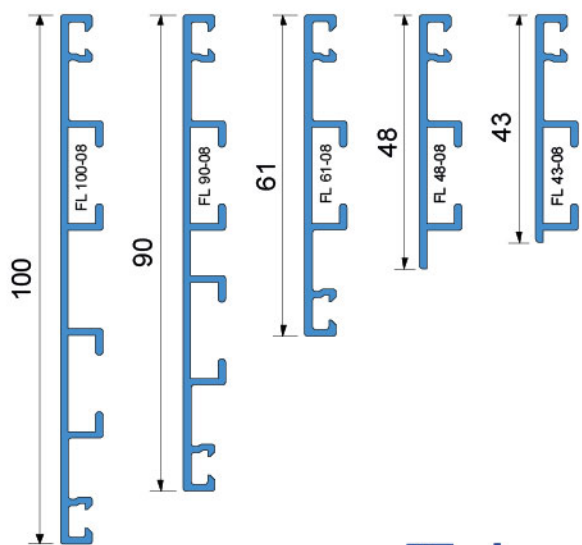
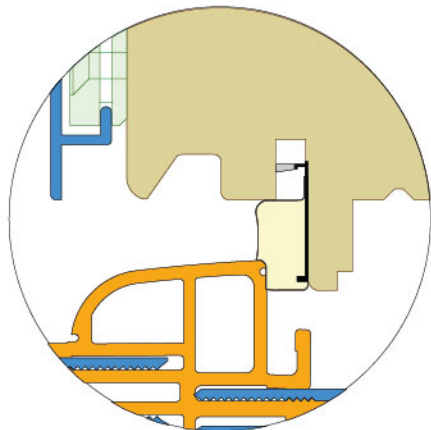
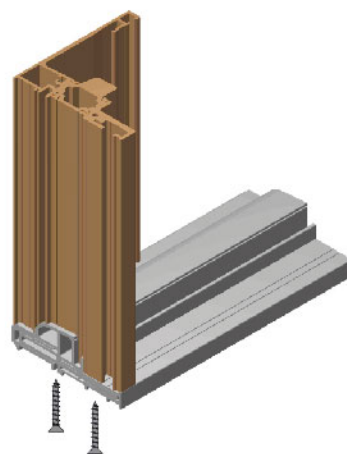
**MiX**

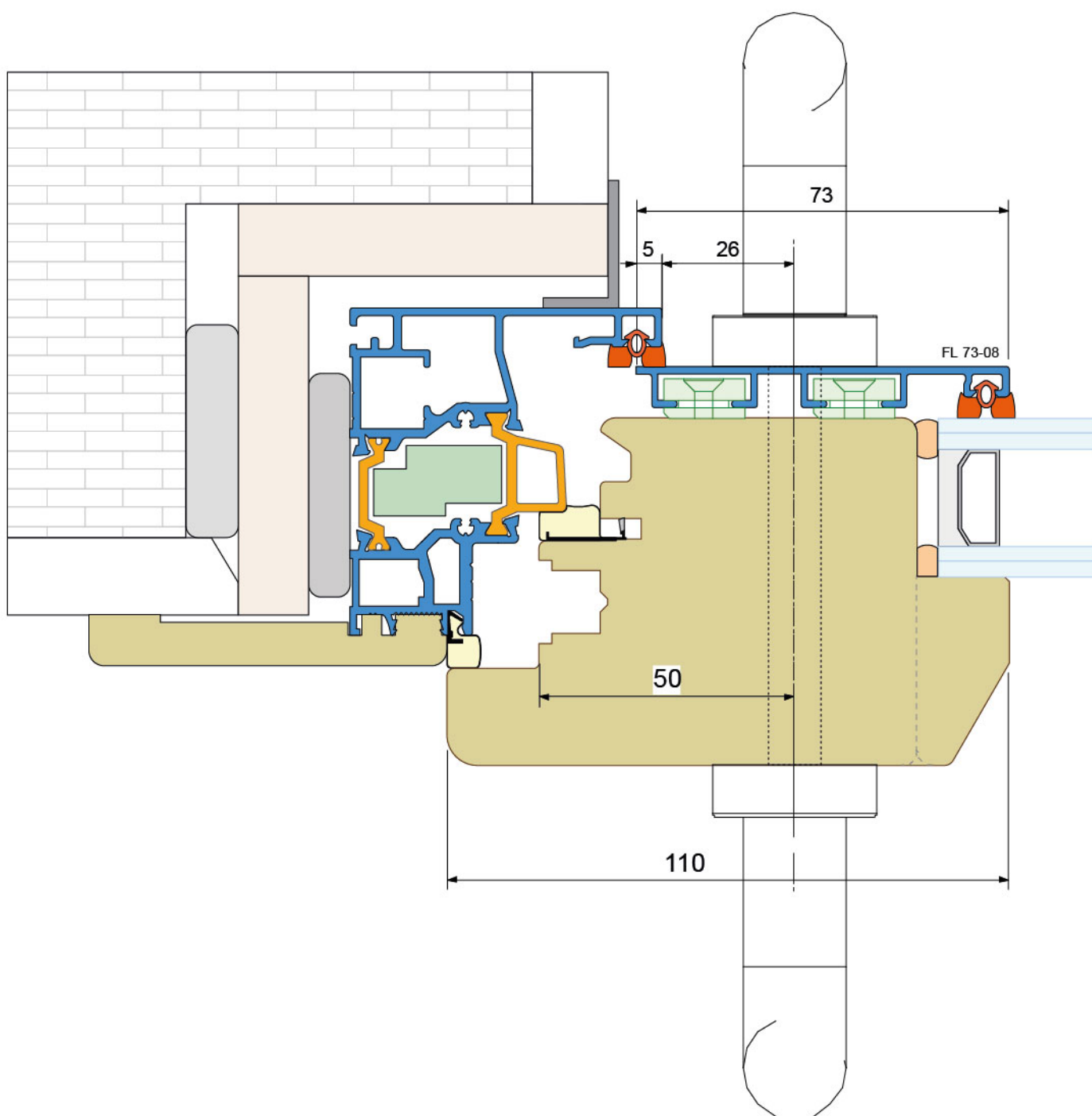
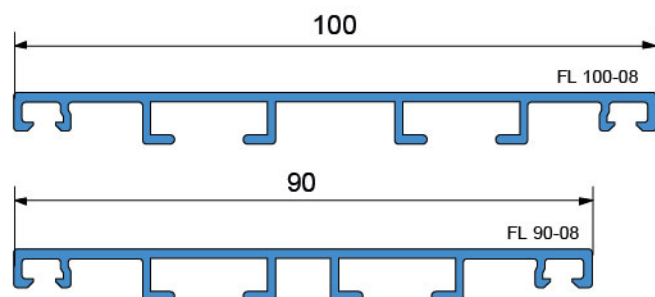
68 Classico

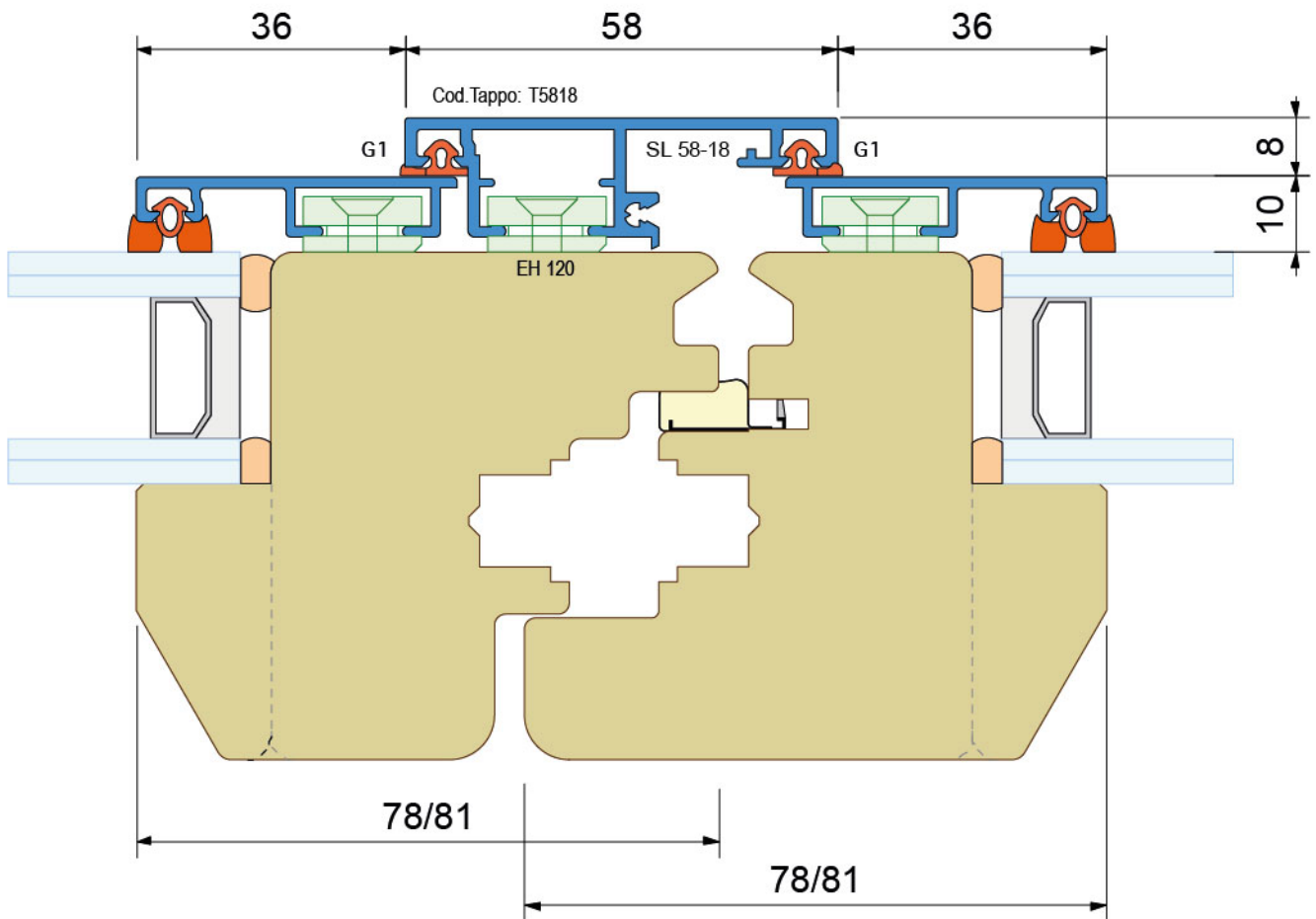
Soluzione senza guarnizione aggiuntiva

*Solution without added seal*

Tenuta all'acqua *Water tightness = 6A*

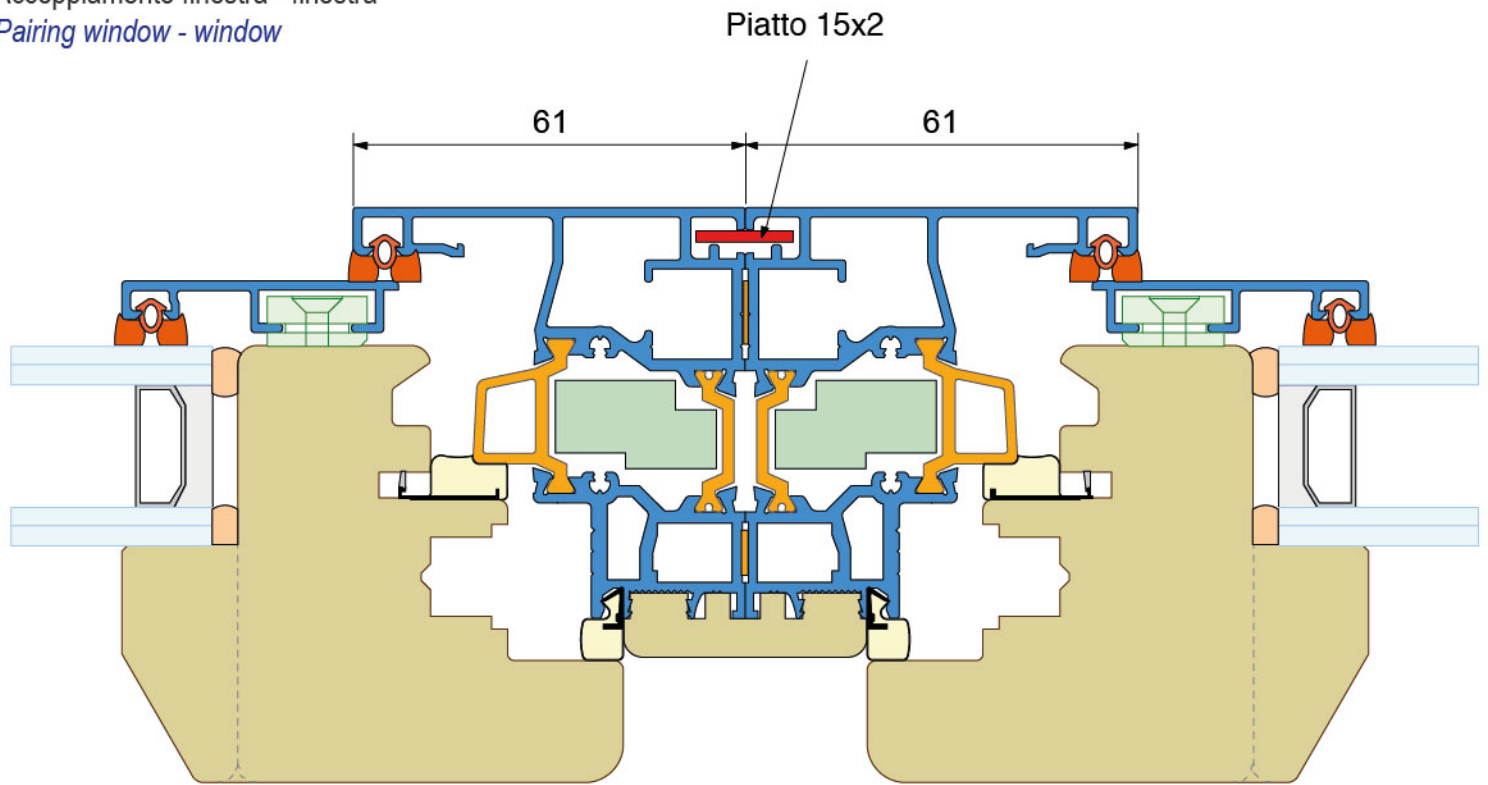




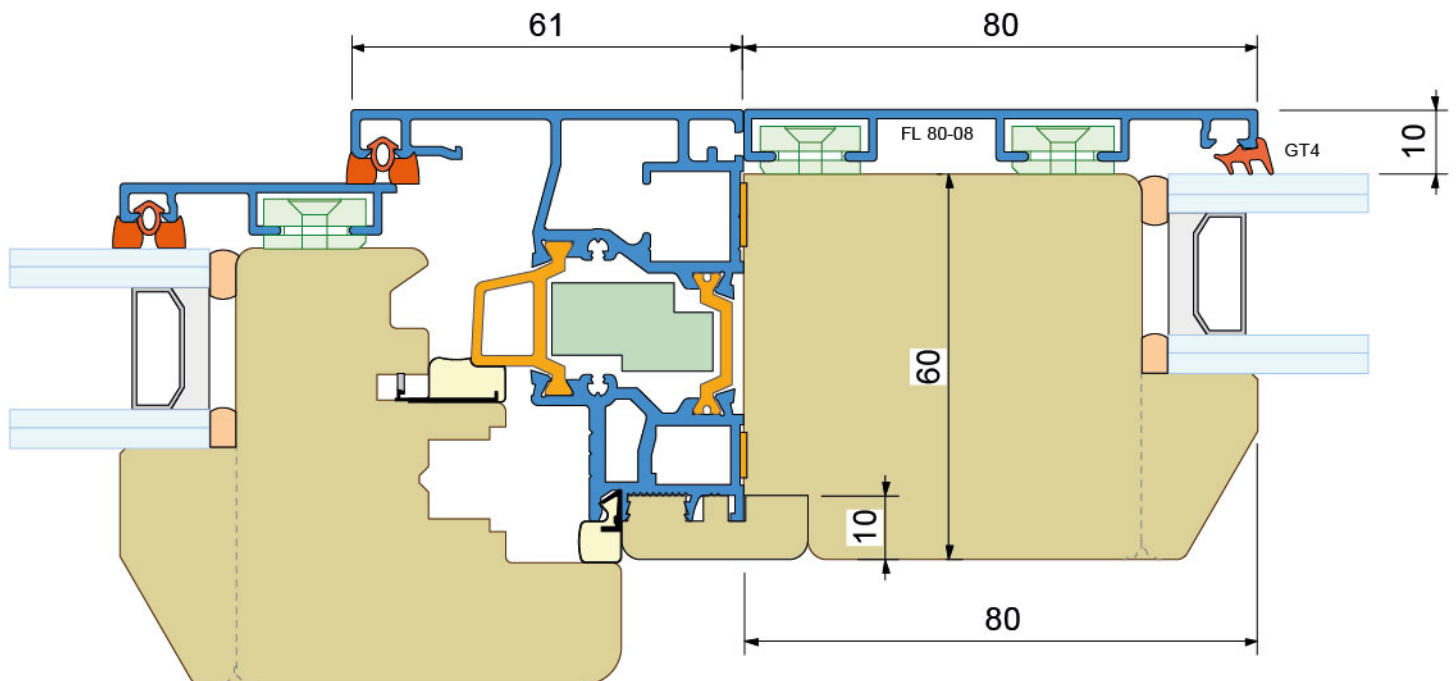


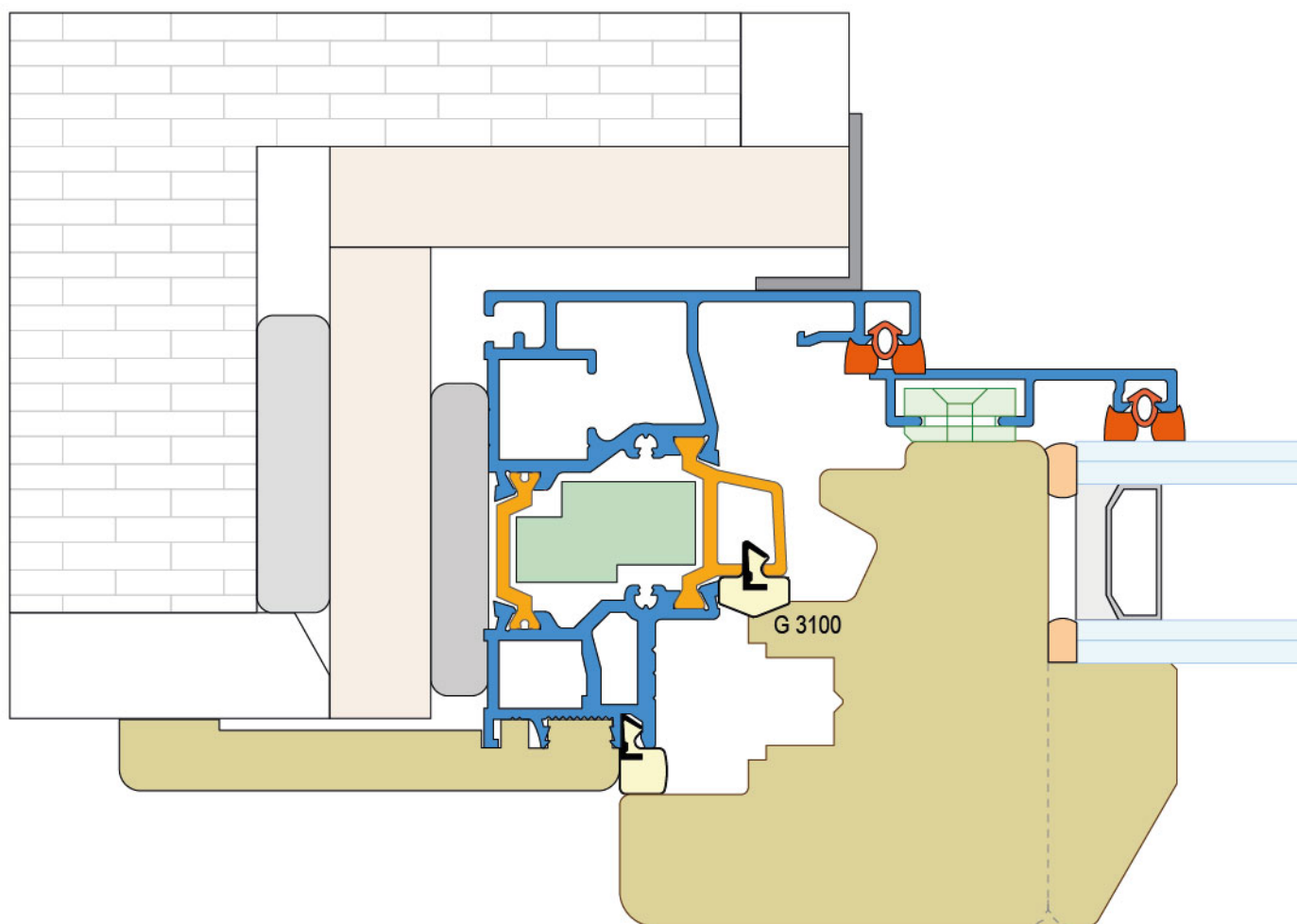


Accoppiamento finestra - finestra  
Pairing window - window



Accoppiamento finestra - telaio fisso  
Pairing window - fixed frame





Mix è un sistema modulare con cui è possibile realizzare svariate geometrie di infisso (rettangoli, trapezi, triangoli, archi).  
*Mix is a modular system and it is possible to make various geometries of frame (rectangles, trapezoids, triangles, arcs).*

